

This document contains confidential information. Any unauthorized copy, disclosure or distribution is prohibited.

## EN Replacing recalled power cords (expansion)

### Affected Countries

US, CA

### Affected Appliances

See pages 5 - 6.

### Fault description / Customers complaint / Diagnostic Codes

Between FD 8801 and FD 9501, connections for power cords plugged into power modules can overheat and cause property damage.

#### Diagnostic Codes (DC)

The following table contains diagnostic codes which most commonly occur with the mentioned fault description. Depending on the actual customer information, other diagnostic codes are possible.

DC	Fault description of the customer
111100000000	No Power (display or illumination does not work)
18X500000000	Safety Action

### Root cause

Power cords can overheat and could possibly cause property damage.

### Solution



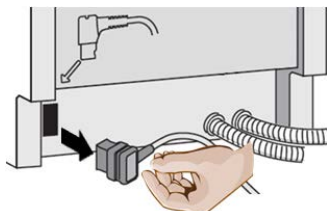
**WARNING: Risk of electrical shock**

**Only qualified / authorized personnel should perform electrical work.**

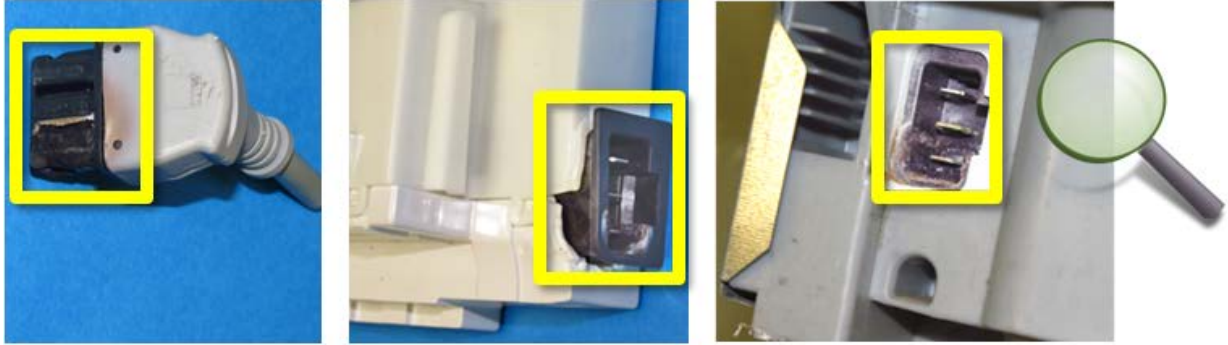
Do not work on an energized circuit. Doing so could result in serious injury or death. Do not attempt any work on the dishwasher electric supply circuit until you are certain the circuit is de-energized.

Make sure electrical work is properly installed and all electrical connections are properly made per national and local electrical codes. There must be no loose electrical connections. A strain relief must be used.

1. Shut off water and disconnect electric supplies. Remove screws from installation mounting brackets. Pull out dishwasher.
2. Unplug power supply cord from rear of power module.



3. Check power cord plug and power module outlet closely for possible damage (e.g. discoloration, burning, sooting or melting).



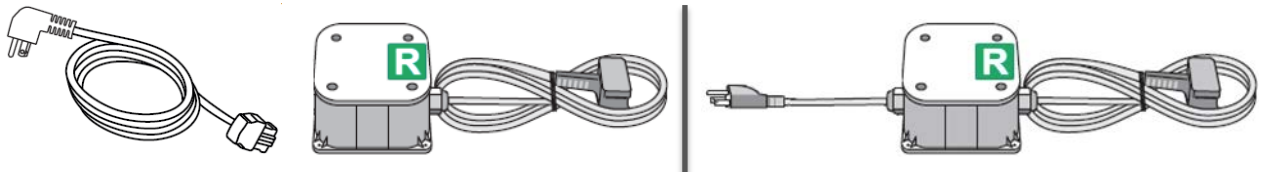
4. If the power module has any damage or if the power cord plug is stuck / difficult to remove by hand, **replace the power module**.



If the power module is damaged, order it and schedule a return trip. When the replacement power module has been obtained, go to the Attachment (at the end of these instructions) for power module replacement instructions.

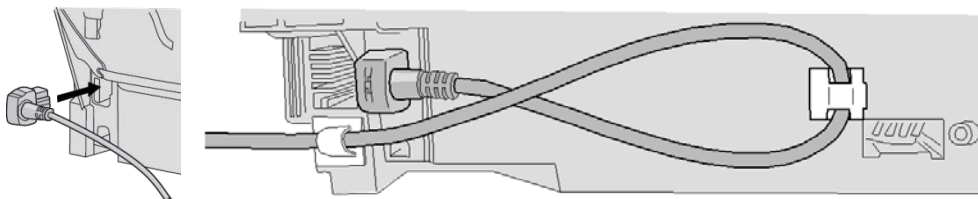
If power module and cord are free from damage, proceed to step 5 below.

5. Replace power cord. The **12021614** replacement cord kit contains both a power cord (for installations with cords plugged into outlets) and a junction box with power cord (for hard-wired installations). **12010137** and **12010384** kits come with a junction box with a short power cord with plug. All plug into the power module the same way (see next step below).

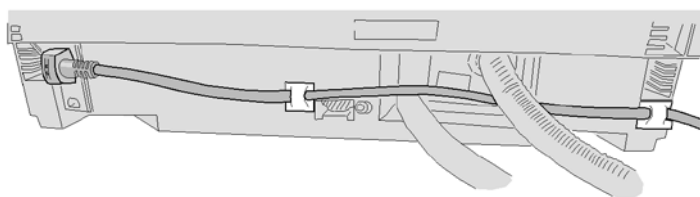


6. Plug the replacement power cord plug into the power module outlet until it's **securely** seated (*below*).

Install both self-adhesive cord clips exactly as shown below, orienting the clips up or to the right depending on where the power cord **extends beyond** the dishwasher.



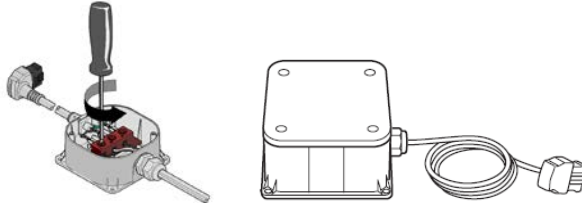
Cord extending beyond the **left** side of the dishwasher



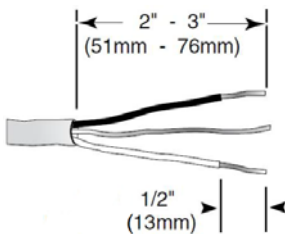
Cord extending beyond the **right** side of the dishwasher

7. If using the replacement power cord with 120 VAC male plug, simply plug it into the customer outlet. If hard (direct) wiring is required, use the junction box with power cord and wire to it as follows:

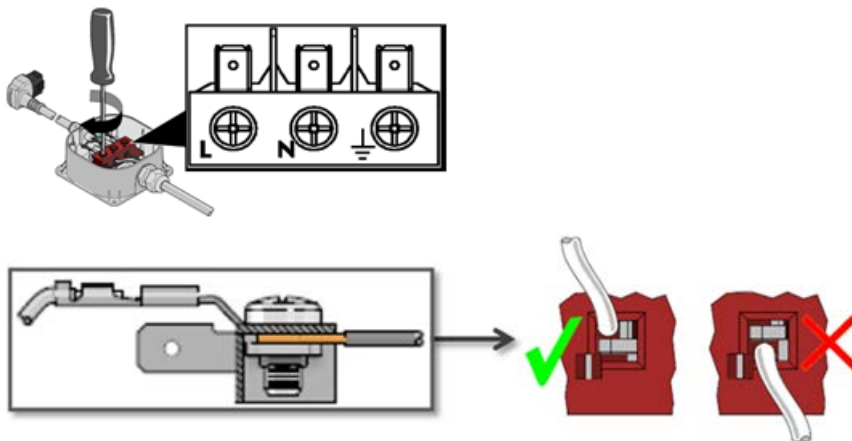
- a. If there is a short cord with plug and strain relief, open the junction box, loosen the three (3) terminal screws and remove the cord and strain relief. Do not force or remove the three (3) terminal screws.



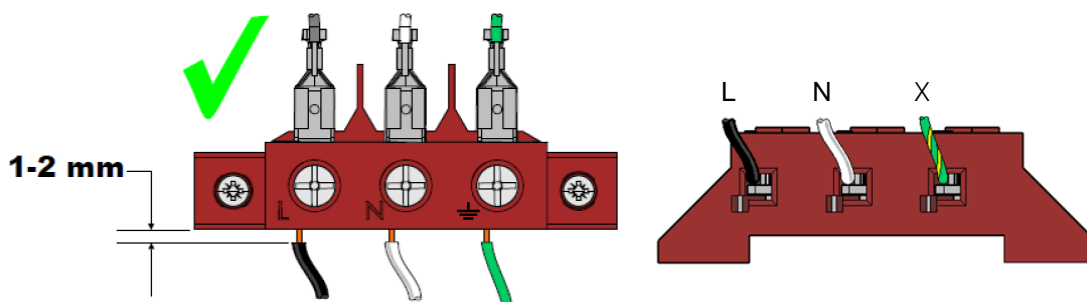
- b. If household cable wires aren't prepared for connecting to the terminal block, strip the outer casing to expose 2" - 3" (51 - 76 mm) of all three wires and strip 1/2" (13 mm) insulation from each wire (see below). Wires must be solid, not stranded.



- c. Insert the household cable through the provided strain relief (suitable for NM-B 12/2 – NM-B 14/2 cable with ground), tighten the strain relief onto the cable and connect the wires to the terminals according to the line (L), neutral (N) and ground (X) symbols. Make sure each wire is above the terminal block clamp and wire insulation is not caught in the clamp (below). Carefully tighten screws to secure wires.



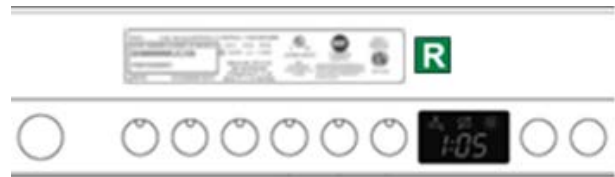
When completed, the connections should look like this:



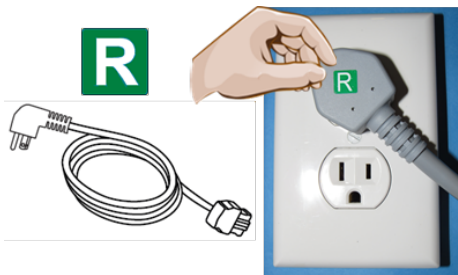
**IMPORTANT** -- pull on each wire to make sure it's secure. Retighten any loose wires.

**⚠WARNING:** Loose wires can cause overheating.

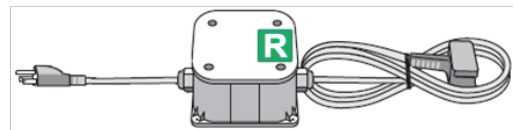
8. Slide in dishwasher, reinstall mounting brackets and reconnect water / electric supplies. Check dishwasher operation.
9. Locate the serial label (on the right side or the top of the inner door, depending on the model), clean the stainless steel surface to the right of it and attach one of the provided self-adhesive green "R" labels there.



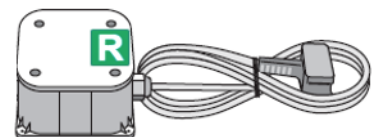
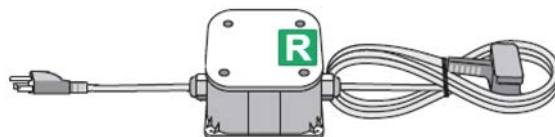
10. Make sure there is a 2<sup>nd</sup> self-adhesive green "R" label located at the electrical supply.
  - a. When plugging into an outlet, attach one of the provided self-adhesive green "R" labels onto the back of the flat plug of the power cord or simply plug the short cord of the junction box into the outlet.



**OR**



- b. When using the junction box with power cord for hard-wired installations, whether with or without a short power cord, note the self-adhesive green "R" label is already affixed onto the junction box cover.



Properly dispose of the original cord according to local requirements.

**It is illegal to reuse or repurpose a recalled part!**

### Parts required

**12021614** or **12010137** or **12010384** (certain models with wooden door panels only).

Determine if dishwasher is hard-wired or plugged into an outlet (receptacle) – make sure you note this on the service ticket.

- If the dishwasher is plugged into an outlet (receptacle), use the power cord.
- If the dishwasher is hard-wired, use the junction box with power cord.

### Change history

Version	Comment
A	New bulletin

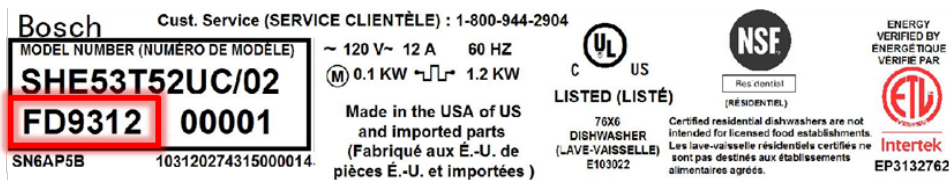
**Affected Appliances**

Bosch and Thermador (FD) serial #'s from **FD 9209 – 9403**:

Kenmore 18-digit serial numbers starting with **103** or **104**:

Bosch Model #		Thermador Model #	Kenmore Model #	
SHE33T52UC	SHP65T52UC	DWHD440MFM	63012302311(00)	63012919312(00)
SHE33T55UC	SHP65T55UC	DWHD440MFP	63012302312(00)	63012919313(00)
SHE33T56UC	SHP65T56UC	DWHD440MPR	63012303311(00)	63012312311(00)
SHE53T52UC	SHP65T75UC		63012303312(00)	63012312312(00)
SHE53T55UC	SHP65TF5UC		63012309311(00)	63012313311(00)
SHE53T56UC	SHP65TL2UC		63012309312(00)	63012313312(00)
SHE53TF2UC	SHP65TL5UC		63012322311(00)	63012319311(00)
SHE53TF5UC	SHP65TL6UC		63012322312(00)	63012319312(00)
SHE53TF6UC	SHP7PT55UC		63012323311(00)	63012922311(00)
SHE53TL2UC	SHV53T53UC		63012902311(00)	63012922312(00)
SHE53TL5UC	SHV53TL3UC		63012902312(00)	63012922313(00)
SHE53TL6UC	SHV68T53UC		63012903311(00)	63012923311(00)
SHE65T52UC	SHV68TL3UC		63012903312(00)	63012923312(00)
SHE65T55UC	SHV7PT53UC		63012912311(00)	63012923313(00)
SHE65T56UC	SHV8PT53UC		63012912312(00)	63012929311(00)
SHE68T52UC	SHX53T55UC		63012912313(00)	63012929312(00)
SHE68T55UC	SHX53TL5UC		63012913311(00)	63012929313(00)
SHE68T56UC	SHX65T55UC		63012913312(00)	63012933311(00)
SHE68TL5UC	SHX68T52UC		63012913313(00)	63012933312(00)
SHE7PT52UC	SHX68T55UC		63012919311(00)	63012933313(00)
SHE7PT55UC	SHX68T56UC			
SHE7PT56UC	SHX68TL5UC			
SHE8PT55UC	SHX7PT55UC			
SHP53T55UC	SHX8PT55UC			
SHP53TL5UC				

Bosch, Thermador and Gaggenau FD serial #'s are located on the left side of serial labels, whether serial labels are on the right side or the top of inner doors:



Kenmore 18-digit serial #'s are located on the upper left corner of serial labels:



Bosch, Gaggenau, Thermador serial # range **FD 8801 – 9501**:

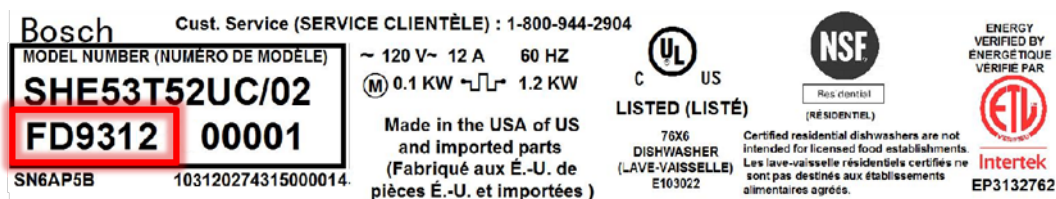
Kenmore serial numbers starting with **010 or 013**:

Bosch Model #		Thermador Model #	Gaggenau Model #	Kenmore Model #
SGE53U52UC	SHX58ExxUC	DWHD640	DF241761	630.14003311
SGE63ExxUC	SHX5ER55UC	DWHD650	DF26076x	630.140031
SGE68U55UC	SHX68ExxUC	DWHD651	DF26176x	630.1300301x
SGV63E03UC	SHX7ER55UC			630.1399301x
SHE68ExxUC	SHX8ER55UC			630.1302301x
SHE7ER55UC	SHX9ER55UC			
SHE8ER55UC	SHX9PT55UC			
SHE9ER55UC	SHX9PT75UC			
SHE9PT55UC	SPE5ES55UC			
SHV58E13UC	SPE68U55UC			
SHV68E13UC	SPV5ES53UC			
SHV7ER53UC	SPX5ES55UC			
SHV9ER53UC	SPX68U55UC			
SHV9PT53UC				

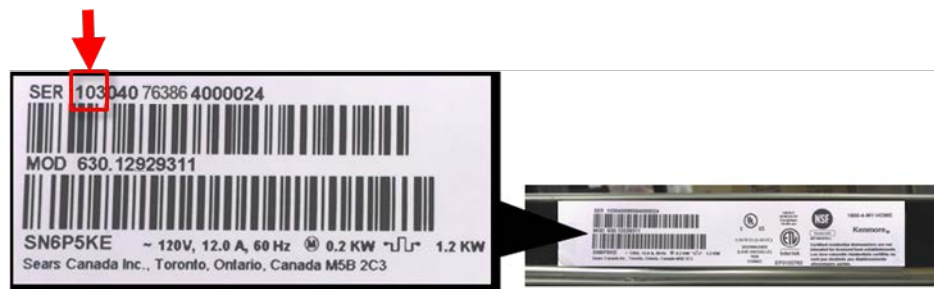
Note: **x** = mechanical variants (any # from 0 – 8)

**xx** = color variants (\_2 = white, \_5 = ss, \_6 = black; 1<sup>st</sup> digit can be 0, 1 or 2)

Bosch, Thermador and Gaggenau FD serial #'s are located on the left side of serial labels, whether serial labels are on the right side or the top of inner doors:



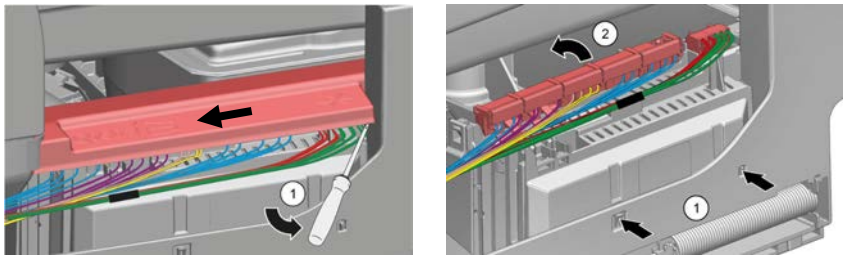
Kenmore 18-digit serial #'s are located on the upper left corner of serial labels:



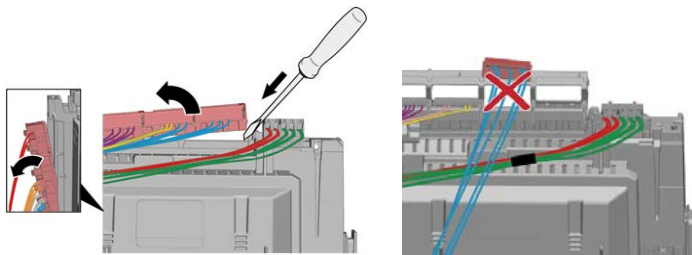
## Attachment

1. If power module is damaged, remove it as follows:

- a. Shut off water and disconnect electric supplies. Remove screws from installation mounting brackets. Pull out dishwasher. Unplug power supply cord from rear of power module.
- b. Remove right side panel and lift off tank fleece insulation from right side of dishwasher.
- c. Slide power module cover to the left (1) and lift up the cover from the power module (*below left*). Two plastic base tabs hold power module in place. To remove power module, (1) gently pry base tabs until they clear module and (2) lift module up from base (*below right*).



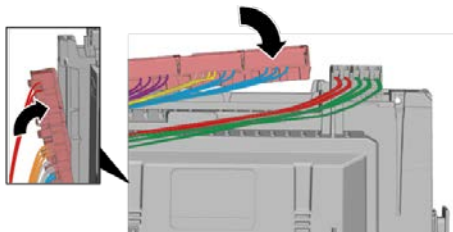
- d. Disconnect top/side wire harnesses from power module (*below left*), making sure to remove connectors with their cable guides, not individually (*below right*). Gently pry up one end of cable guide and lift cable guide with connectors from power module (*below left*).



Note: Some dishwashers may have connectors without cable guides.

2. Install the replacement power module as follows:

- a. Slide the power module down into the dishwasher base until the module tabs snap into the holes in the base.
- b. Connect the harness with cable guides / connectors onto the replacement module.



- c. Snap the power module cover onto the power module.
- d. To complete the repair, proceed to step 5 on page 2.